

GATE OPERATOR

**BIG**

**25QI**

**230 V**

Up to  
2500 kg

Speed up to  
19 m/min



### **P-500BIG25QI**

230 V three-phase sliding gate operator with built-in control unit with inverter. Max. gate weight 2500 kg.



**Accessories for  
BIG series**  
Page 50



**Further accessories:**  
Transmitters page 238  
Photocells page 243  
Flashing lights  
page 246

## FEATURES:

- commercial use
- for gates up to 2500 kg
- three-phase 230 V operator
- mono-phase 230 V power supply
- soft start and soft stop
- adjustable opening and closing speed of the control unit and inverter
- oil bath vertical pinion operator
- painted steel housing
- manual release mechanism
- anti-crush adjustable mechanical clutch

## PROS:

- suitable for large sliding gates
- higher torque and power thanks to the inverter technology
- self-ventilated operator for intensive use
- metal and bronze gears to increase endurance and reduce noise



### UNLOCK

Thanks to the large handle, the unlocking maneuver is always feasible even for particularly heavy gates.



### CLUTCH

Adjustable dry clutch, interposed between the motor and the reducer, for the safeguard of the mechanical parts in case of obstacles to gate movement.



### ENGINE

The ventilated three-phase motor guarantees intensive use.



### ELECTRONICS

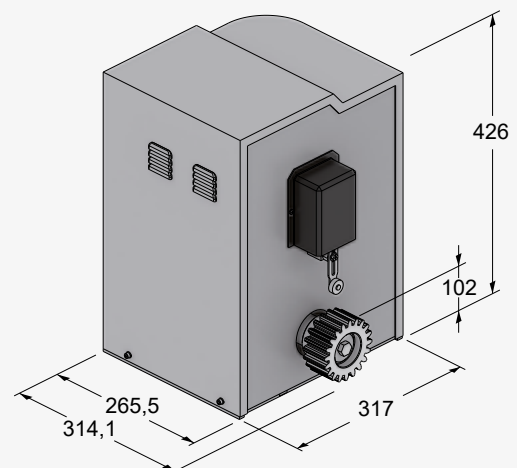
The control unit with inverter allows to vary the speed and to program the acceleration and deceleration ramps.

## TECHNICAL DRAWINGS

### Technical features

### BIG25QI

Power supply	230 V AC (50 - 60 Hz)
Motor power supply	230 V AC (three-phase)
Open circuit voltage	3 A
Power rating	1000 W
Max. operating speed	adjustable 5 ÷ 19 m/min
Duty cycle	100 %
Operating temperature	-20° C ÷ +55° C
Motor thermal protection	150° C
Degree of protection	IP 54
Max. gate leaf weight	2500 kg
Max. weight cantilever gate leaf	1750 kg
Pinion module	4
Electronic control unit	D820M



# ACCESSORIES

## BIG SERIES ACCESSORIES



**K-400CP25**  
Counterplate for P-500BIG25QI



**K-400CP30**  
Counterplate for P-500BIG40QI



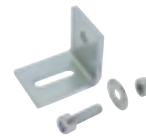
**M-ING0MSTZ12** NEW  
Pinion module 6 (P-500BIG25QI)



**M-ING0000Z12BIG**  
Pinion module 6 (P-500BIG40QI)



**P-550CFZ06**  
Steel rack 30x30 (Module 6, max 4000 kg) 2 meter sections. Pack of 10 m



**P-400CFZ22**  
Steel rack 22x22 (Module 4, max 3000 kg) 2 meter sections. Pack of 4 m

**P-400VSF20**  
Screws and brackets for P-400CFZ22 (40 units per pkg)



**P-400PROFC**  
Galvanized rack attachment profile. 2 meter sections. Compatible with P-400CFZ22



**P-700BAP4**  
Gate stopper with spring



**P-900TWM**  
Master receiver for central interface (manages up to max. 4 TWCs)



**P-900BSD15**  
Deformable safety edge kit l=1,5 m



**P-900TWC**  
Battery-powered wireless slave transmitter for mobile/fixed sensitive edge (manages up to max. 2 sensitive edges per TWC)

**P-900BSD18**  
Deformable safety edge kit l=1,8 m

**P-900BSD20**  
Deformable safety edge kit l=2 m

**P-900BSD25**  
Deformable safety edge kit l=2,5 m



**P-250RXSM2B**  
Self-learning outdoor radio receiver, 433.92 MHz, two-channel, universal, to be wired with cable (14 code memory)



**P-250SM126**  
Memory card for 126 radio codes



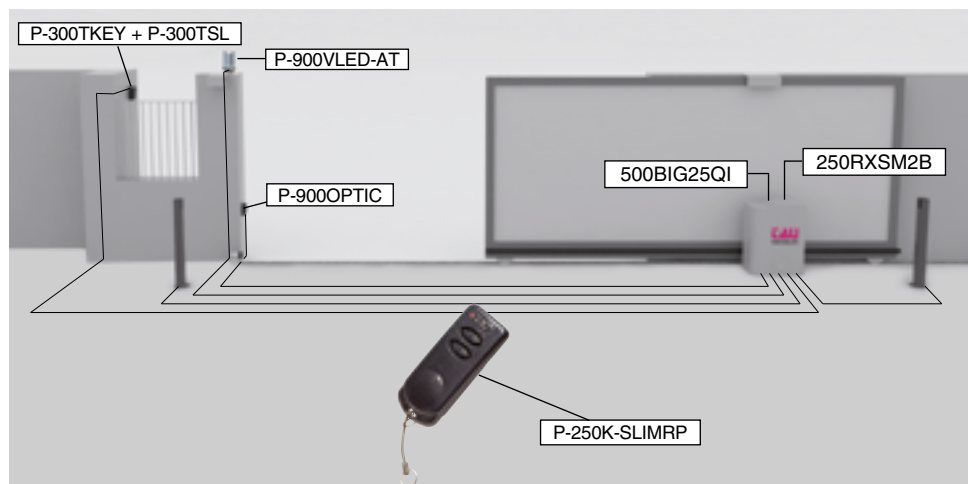
**P-900VLED-AT**  
230 V AC white led flashing light

**P-900VLED-ATO**  
230 V AC orange led flashing light

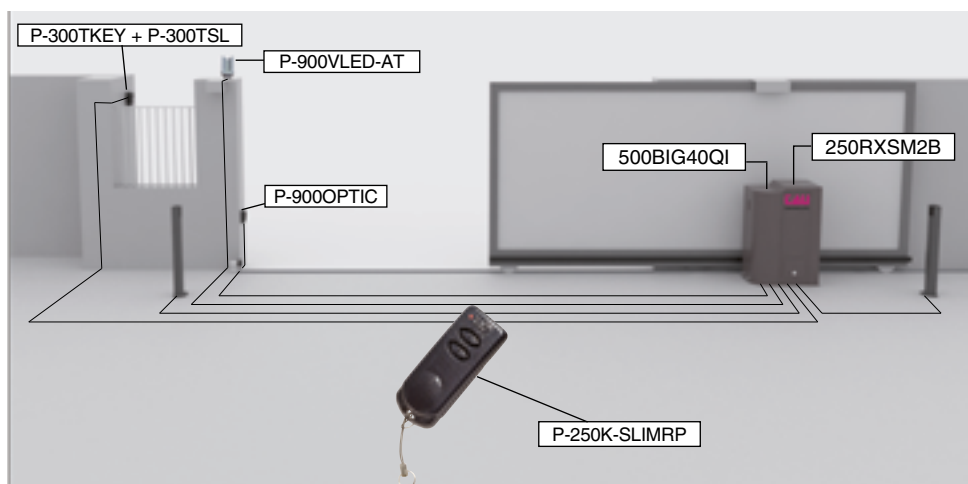


**C-CRT**  
Warning signal

## P-500BIG25QI TYPICAL SYSTEM



## P-500BIG40QI TYPICAL SYSTEM



## CHAIN VERSION

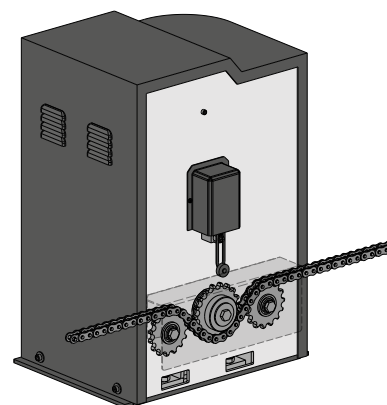
Upon request, the MASTER gearmotor is available with the pinion for chain transmission.

## 120 VOLT VERSION



AVAILABLE

Upon request, the BIG gearmotor is also available in the 120 Volt version for foreign markets.



## Use and maintenance manuals



BIG



D820M

